


LINE CABLES
Assy


2021/10/19

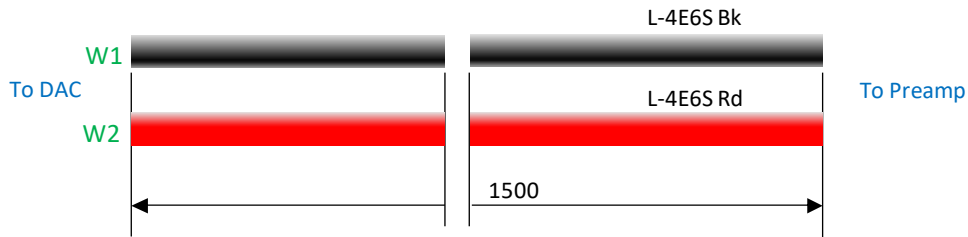
Assembly

CB1: DAC to Preamp

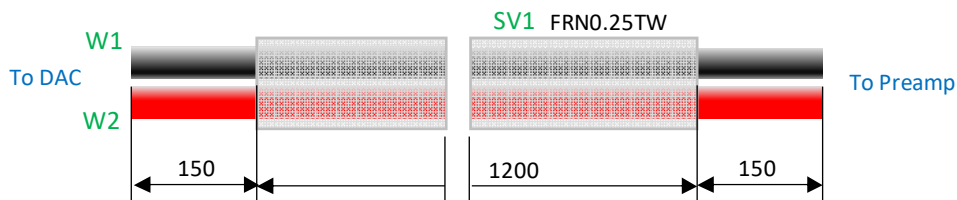
Tools: wire stripper, cutter, nipper, solder, soldering iron, blower

(1) Cut black and red wires (L-4E6S) into 1.5m long (W1-2)

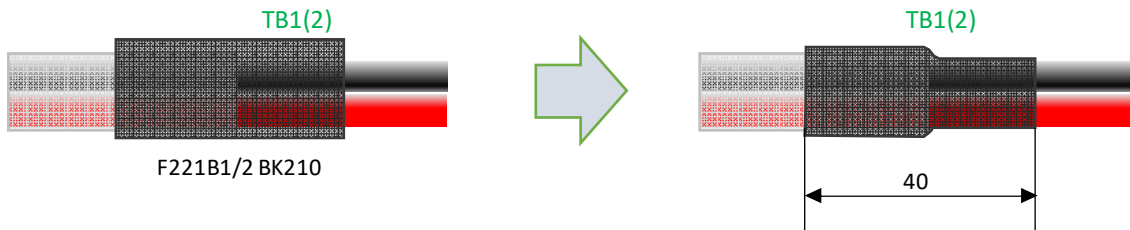
Unit: mm



(2) Cut sleeving (FRN0.25TW) into 1.2m and slide it onto the wires W1-2



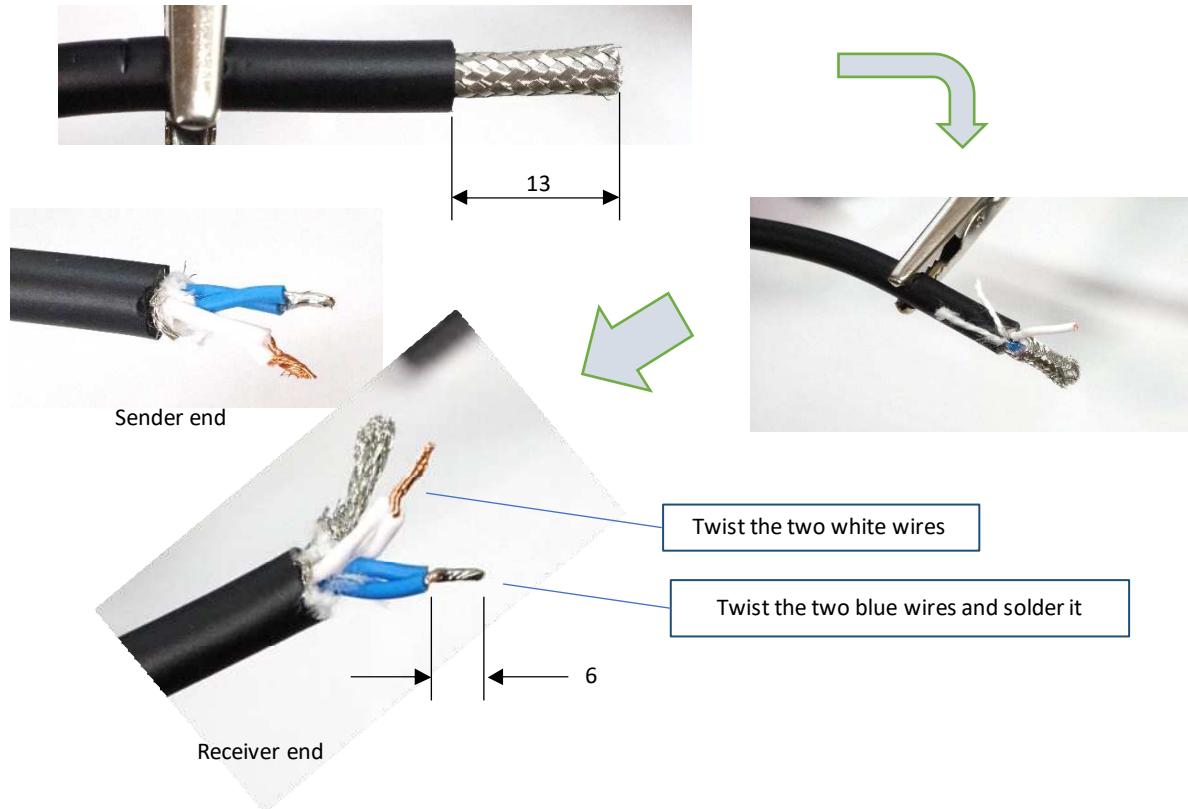
(3) Cut the shrink tubes into two 40mm ones (TB1-2) and slide them onto the wires and sleeves, and shrink the tubes



(4) Slide the shells of the RCA plugs (P1-4) onto the wires



(5) Strip the insulators of the wires



(6) Solder the blue wires to the hot terminal



(7) Solder the white wires to the cold terminal



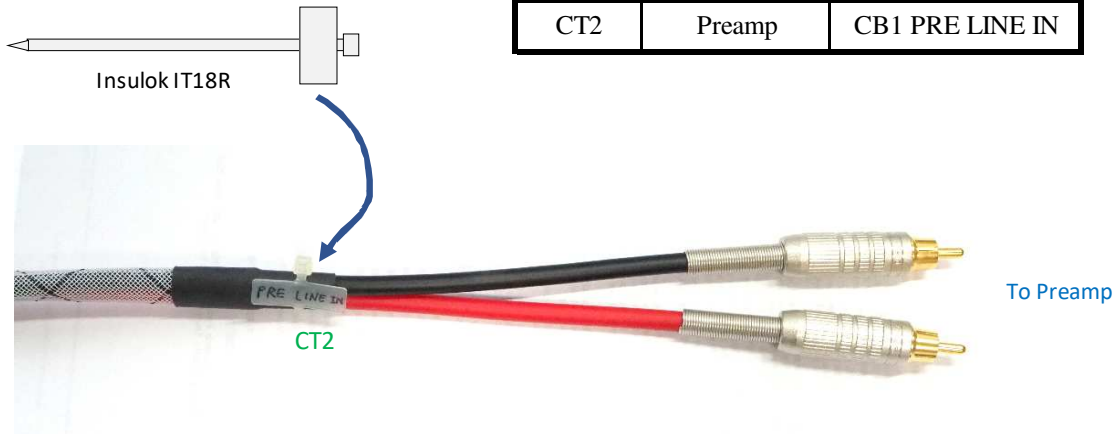
(8) Fix the shell



(9) Attach cable ties

Mark CT1-2 following the table on right.
Tie CT1-2 onto the shrink tubes.

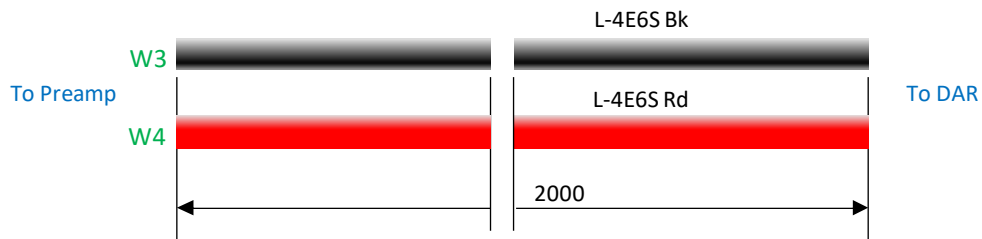
| Ref des | End | Marking |
|---------|--------|-----------------|
| CT1 | DAC | CB1 DAC OUT |
| CT2 | Preamp | CB1 PRE LINE IN |



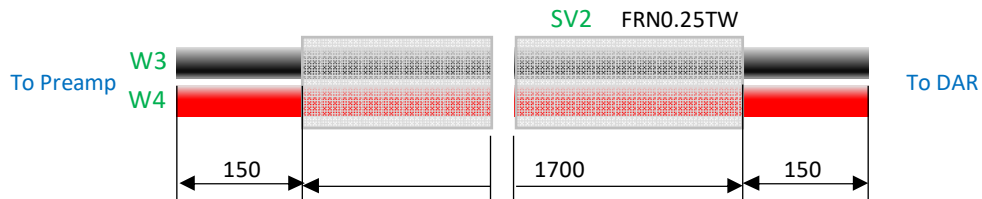
CB2: Preamp to DAR

Tools: wire stripper, cutter, nipper, solder, soldering iron, blower

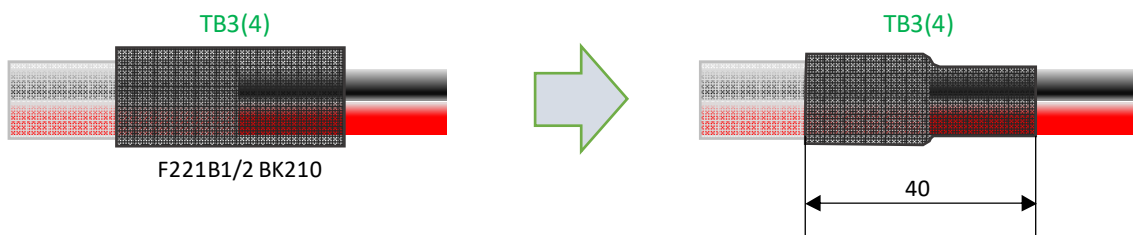
(1) Cut black and red wires (L-4E6S) into 2m long



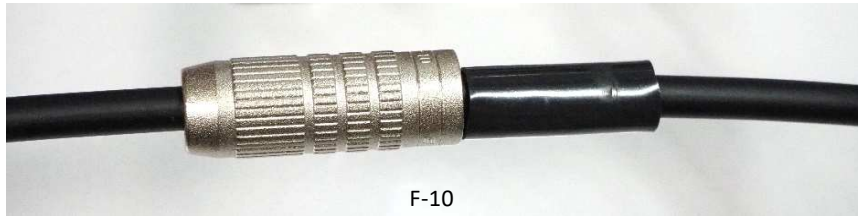
(2) Cut sleeving (FRN0.25TW) into 1.2m and slide it onto the wires (L-4E6S)



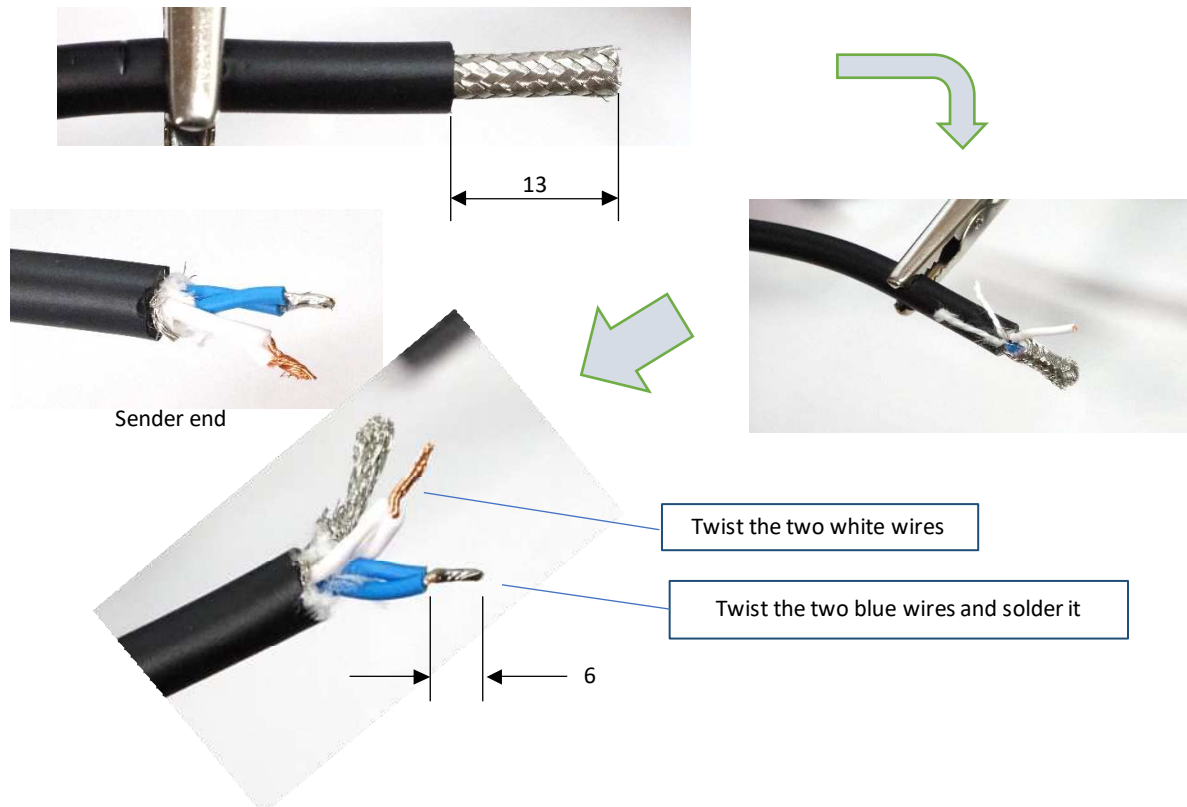
(3) Slide the shrink tubes (TB3-4) onto the wires and sleeveings, and shrink the tubes



(4) Slide the shells of the RCA plugs (P5-8) onto the wires



(5) Strip the insulators of the wires



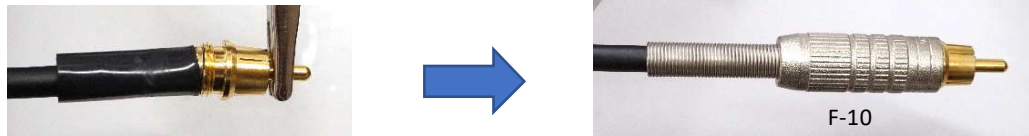
(6) Solder the blue wires to the hot terminal



(7) Solder the white wires to the cold terminal



(8) Fix the shell

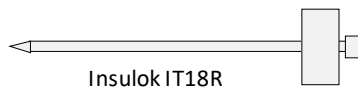


(9) Attach cable ties

Mark CT3-4 following the table on right.

Tie CT3-4 onto the shrink tubes

| Ref des | End | Marking |
|---------|--------|------------|
| CT3 | Preamp | CB2 EQ OUT |
| CT4 | DAR | CB2 DAR IN |



CB3: DAR to Preamp

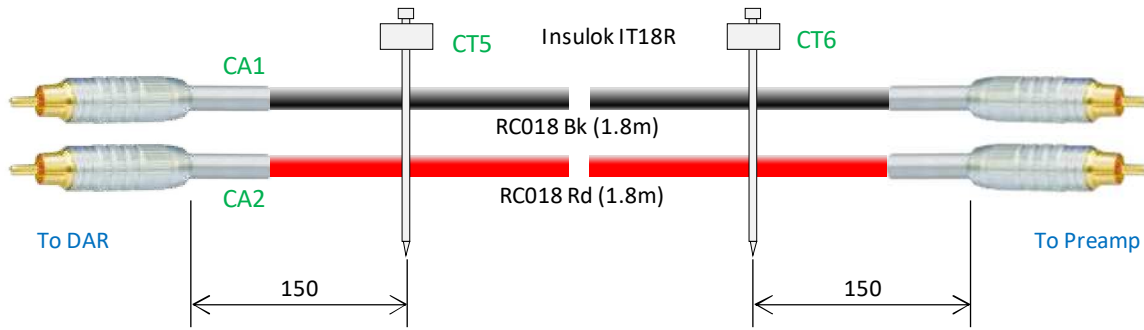
Tools: nipper

(1) Mark the cable ties CT5-6 (Insulok IT18R) and tie the cable assys CA1-2 with them.

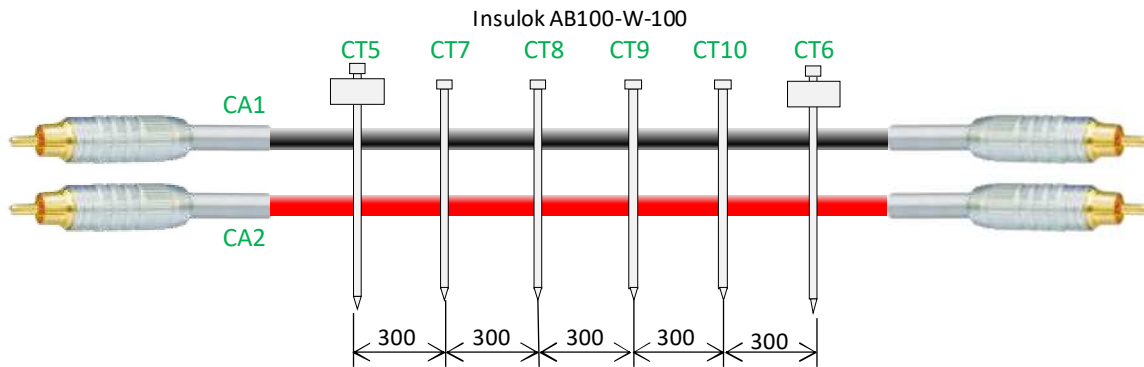
Mark CT5-6 following the table on right.

Tie CT5-6 at the points shown in the figure below.

| Ref des | End | Marking |
|---------|--------|---------|
| CT5 | DAR | DAR OUT |
| CT6 | Preamp | PRE AUX |



(2) Tie cable assys CA1-2 with cable tie CT8-10 (Insulok AB100-W-100) at intervals of 300mm.



CB4: BDP to Preamp

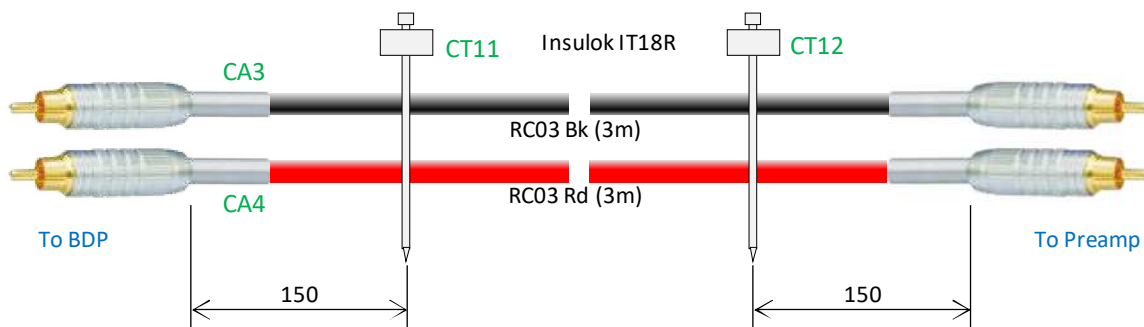
Tools: nipper

(1) Mark the cable ties CT11-12 (Insulok IT18R) and tie the cable assys CA3-4 with them.

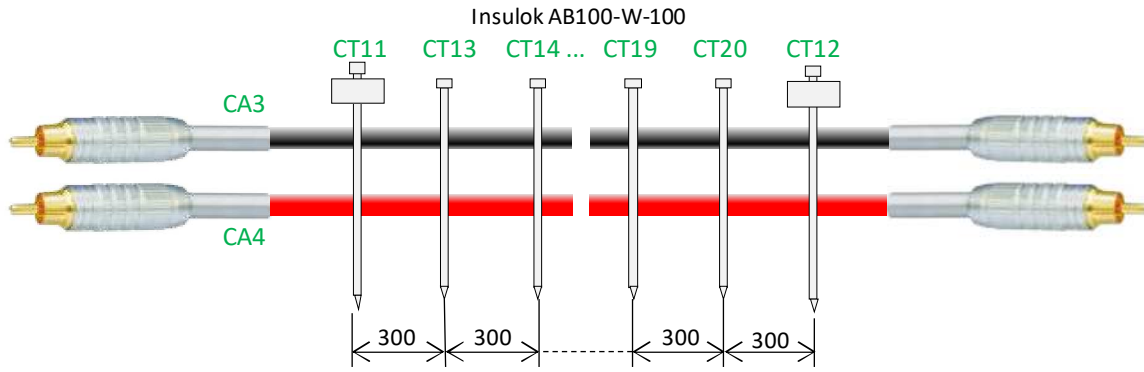
Mark CT11-12 following the table on right.

Tie CT11-12 at the points shown in the figure below.

| Ref des | End | Marking |
|---------|--------|-------------|
| CT11 | BDP | CB4 BDP OUT |
| CT12 | Preamp | CB4 PRE AUX |



(2) Tie cable assys CA3-4 with cable tie CT13-20 (Insulok AB100-W-100) at intervals of 300mm.



CB5: Preamp to Network

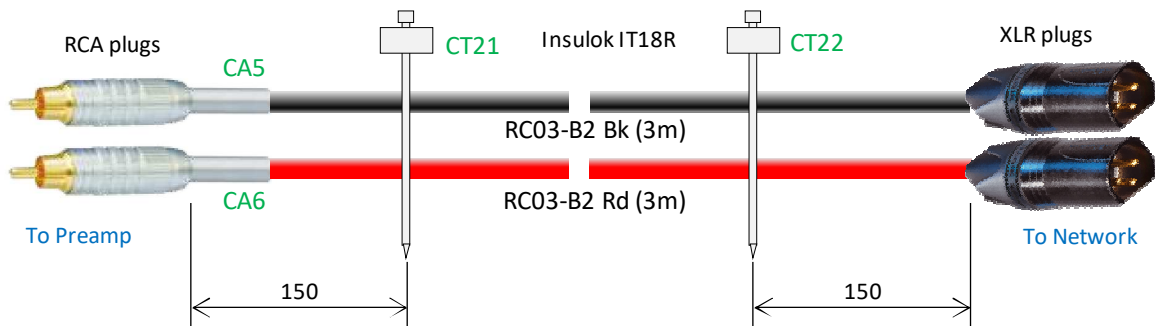
Tools: nipper

(1) Mark the cable ties CT21-22 (Insulok IT18R) and tie the cable assys CA5-6 with them.

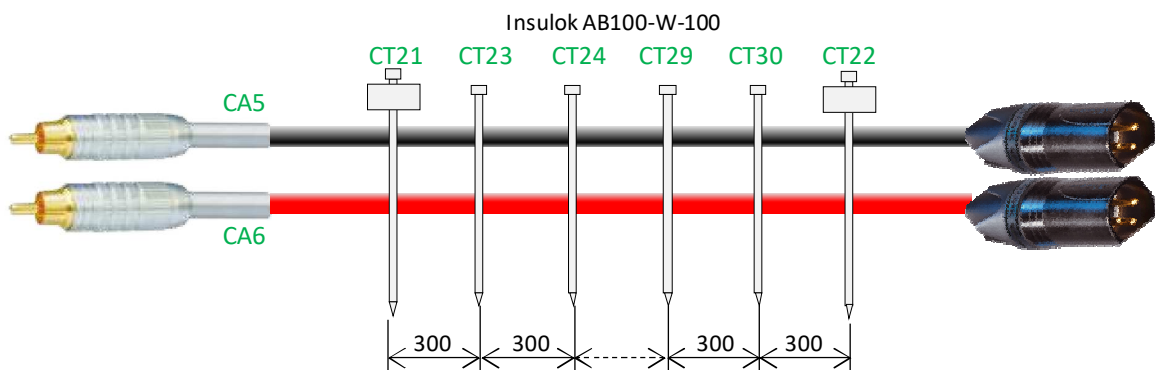
Mark CT21-22 following the table on right.

Tie CT21-22 at the points shown in the figure below.

| Ref des | End | Marking |
|---------|---------|-------------|
| CT21 | Preamp | CB5 PRE OUT |
| CT22 | Network | CB5 NET IN |



(2) Tie cable assys CA5-6 with cable tie CT23-30 at intervals of 300mm.



CB6: Network to Tweeter/Squawker Amp (L)

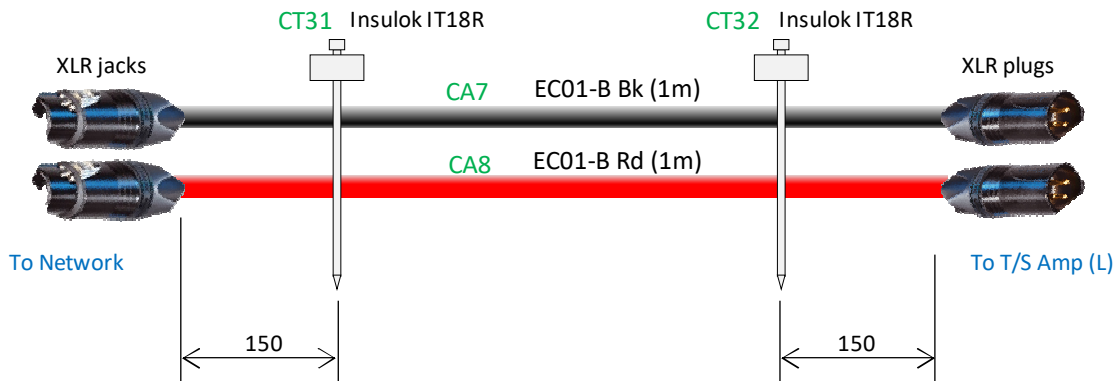
Tools: nipper

(1) Mark the cable ties CT31-32 (Insulok IT18R) and tie the cable assys CA7-8 with them.

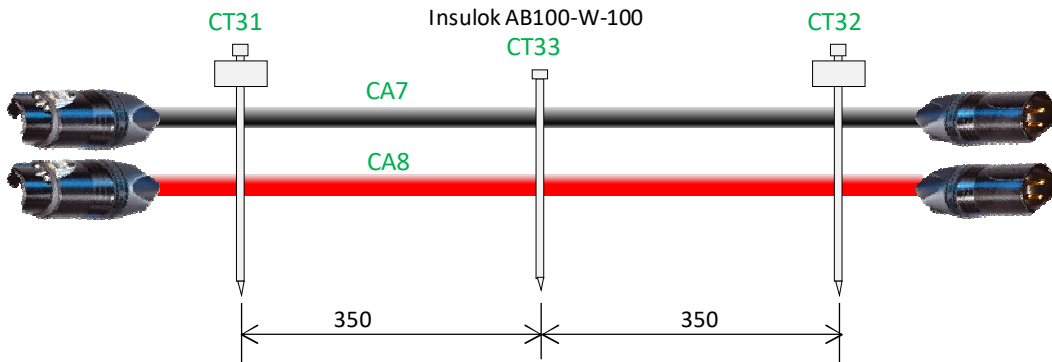
Mark CT31-32 following the table on right.

Tie CT31-32 at the points shown in the figure below.

| Ref des | End | Marking |
|---------|-------------|--------------|
| CT31 | Network | CB6 HM OUT L |
| CT32 | T/S amp (L) | CB6 HM IN L |



(2) Tie cable assys CA7-8 with cable tie CT33 at intervals of 350mm.



CB7: Network to Tweeter/Squawker Amp (R)

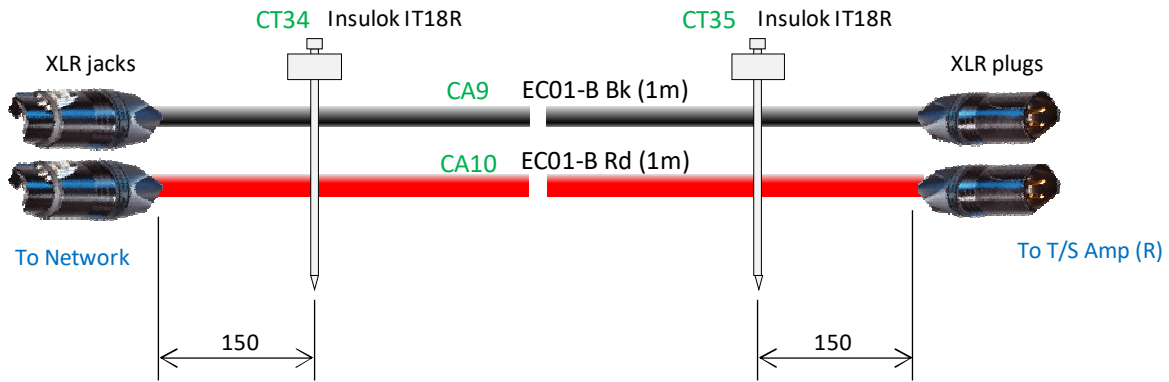
Tools: nipper

(1) Mark the cable ties CT34-35 (Insulok IT18R) and tie the cable assys CA9-10 with them.

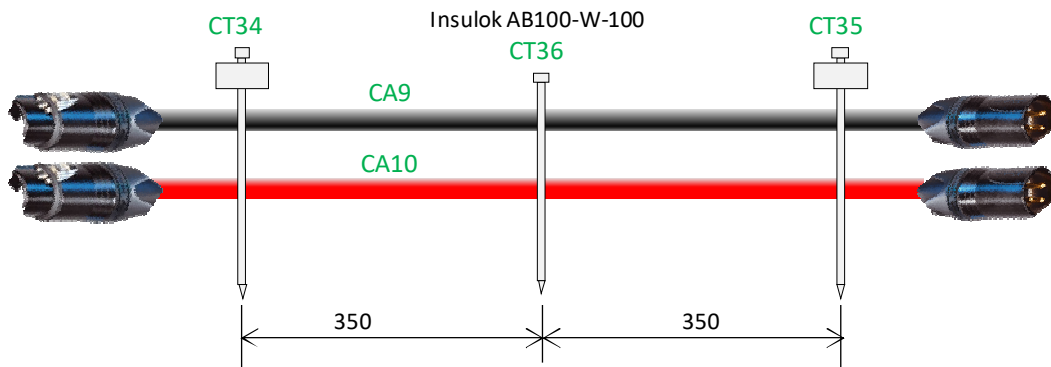
Mark CT34-35 following the table on right.

Tie CT34-35 at the points shown in the figure below.

| Ref des | End | Marking |
|---------|-------------|--------------|
| CT34 | Network | CB7 HM OUT R |
| CT35 | T/S amp (R) | CB7 HM IN R |



(2) Tie cable assys CA9-10 with cable tie CT36 at intervals of 350mm.



CB8: Network to Master Volume (L)

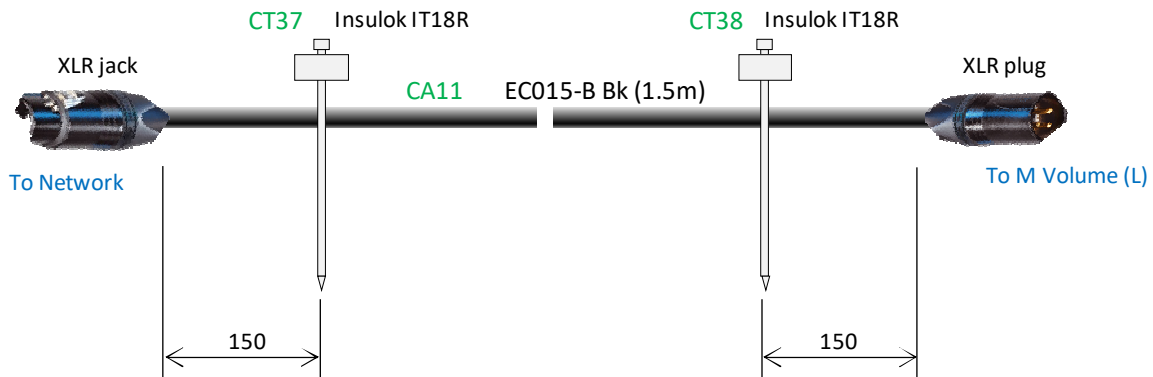
Tools: nipper

(1) Mark the cable ties CT37-38 (Insulok IT18R) and attach them on the cable assy CA11.

Mark CT37-38 following the table on right.

Tie CT37-38 at the points shown in the figure below.

| Ref des | End | Marking |
|---------|--------------|---------------|
| CT37 | Network | CB8 LOW OUT L |
| CT38 | M Volume (L) | CB8 LOW IN L |



CB9: Network to Master Volume (R)

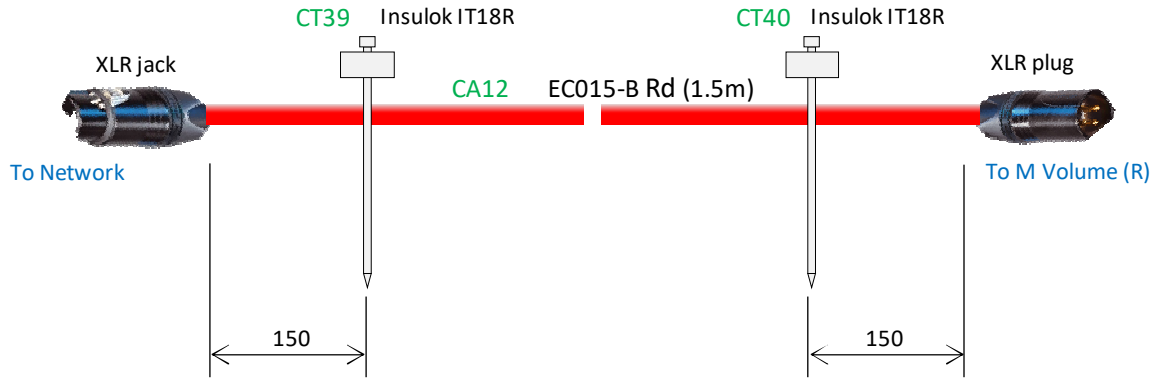
Tools: nipper

(1) Mark the cable ties CT39-40 (Insulok IT18R) and attach them on the cable assy CA12.

Mark CT39-40 following the table on right.

Tie CT39-40 at the points shown in the figure below.

| Ref des | End | Marking |
|---------|--------------|---------------|
| CT39 | Network | CB9 LOW OUT R |
| CT40 | M Volume (R) | CB9 LOW IN R |



CB10: Master Volume to Woofer Amp (L)

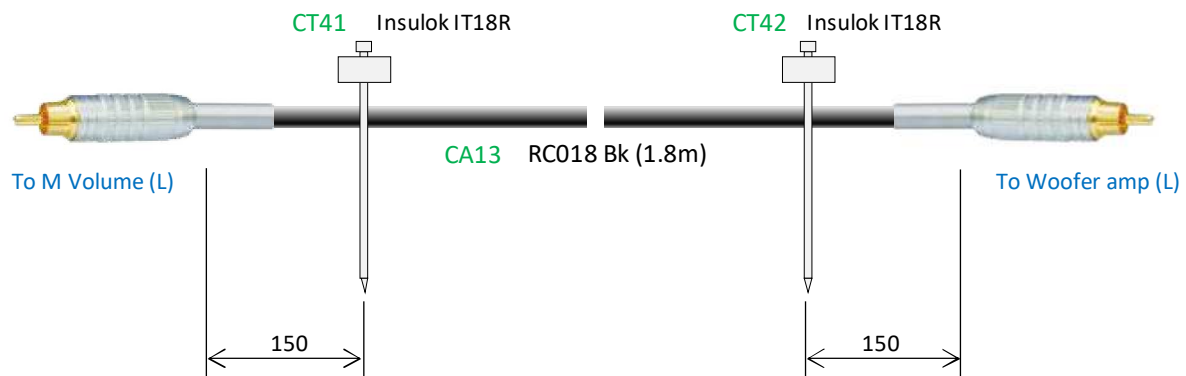
Tools: nipper

(1) Mark the cable ties CT41-42 (Insulok IT18R) and attach them on the cable assy CA13.

Mark CT41-42 following the table on right.

Tie CT41-42 at the points shown in the figure below.

| Ref des | End | Marking |
|---------|----------------|----------------|
| CT41 | M Volume (L) | CB10 PRE OUT L |
| CT42 | Woofer amp (L) | CB10 POW IN L |



CB11: Master Volume to Woofer Amp (R)

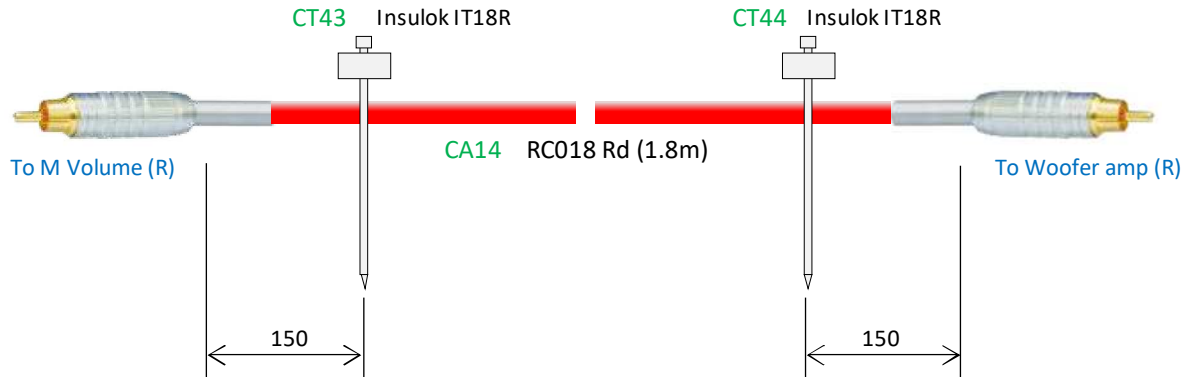
Tools: nipper

(1) Mark the cable ties CT43-44 (Insulok IT18R) and attach them on the cable assy CA14.

Mark CT43-44 following the table on right.

Tie CT43-44 at the points shown in the figure below.

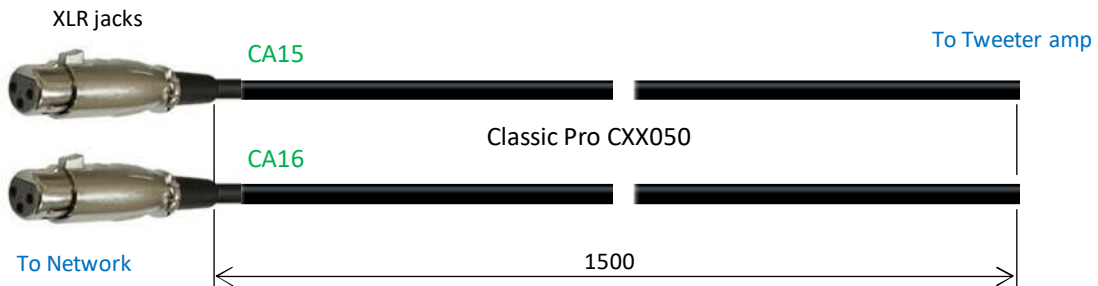
| Ref des | End | Marking |
|---------|-----------------|----------------|
| CT43 | M Volume (R) | CB11 PRE OUT R |
| CT44 | Woofers amp (R) | CB11 POW IN R |



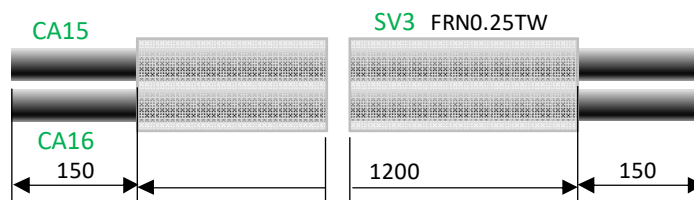
CB12: Network to Tweeter Amp (for temporal use)

Tools: wire stripper, cutter, nipper, solder, soldering iron, blower, sissors, marking pens (black & red)

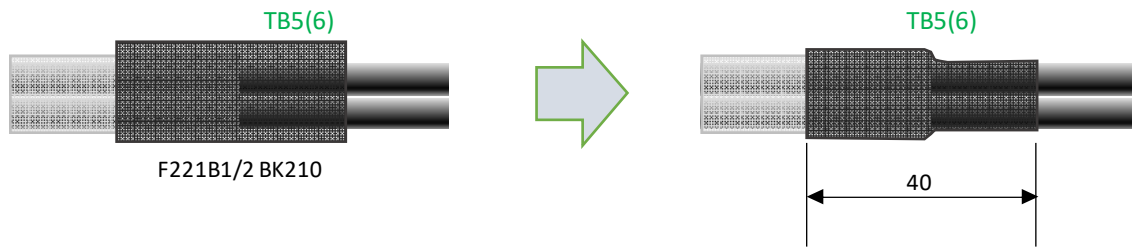
(1) Cut 2 cable assys (Pro CXX050) into 1.5m long (CA15-16)



(2) Cut sleeving (FRN0.25TW) into 1.2m (SV3) and slide it onto the cabel assys CA15-16



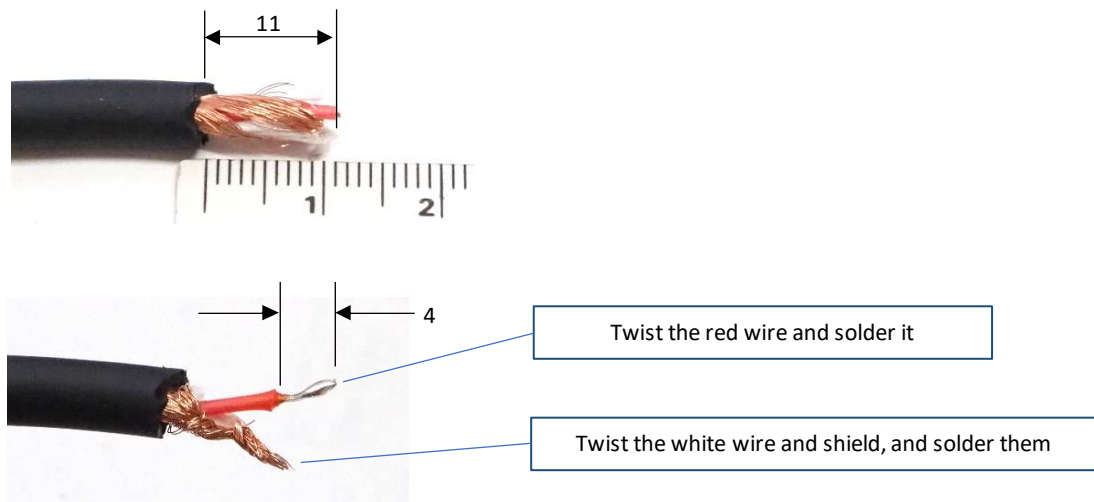
(3) Cut the shrink tubes into two 40mm ones (TB5-6) and slide them onto the wires and sleeveings, and shrink the tubes



(4) Slide the shells of the RCA plugs (P9-10) onto the wires



(5) Strip the insulators of the wires



(6) Solder the red wire to the hot terminal



(7) Solder the white wire and shield to the cold terminal, and crimp the sheath of the cable



(8) Fix the shell

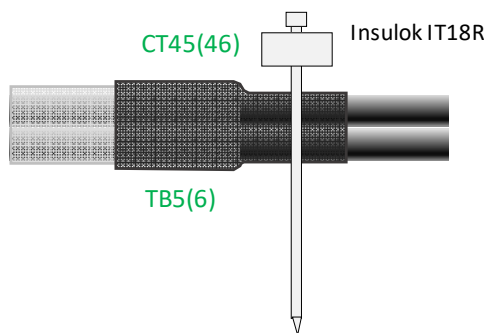


(9) Attach cable ties

Mark CT45-46 following the table on right.

Tie CT45-46 onto the tubes (TB5-6)

| Ref des | End | Marking |
|---------|-------------|---------------|
| CT45 | Network | CB12 HIGH OUT |
| CT46 | Tweeter amp | CB12 HIGH IN |

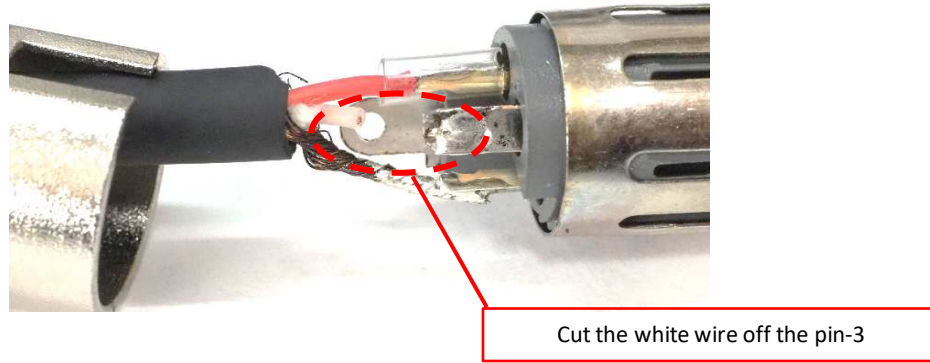


(10) Make pin-3 (cold) of the XLR connectors open

Dismantle the XLR connectors.

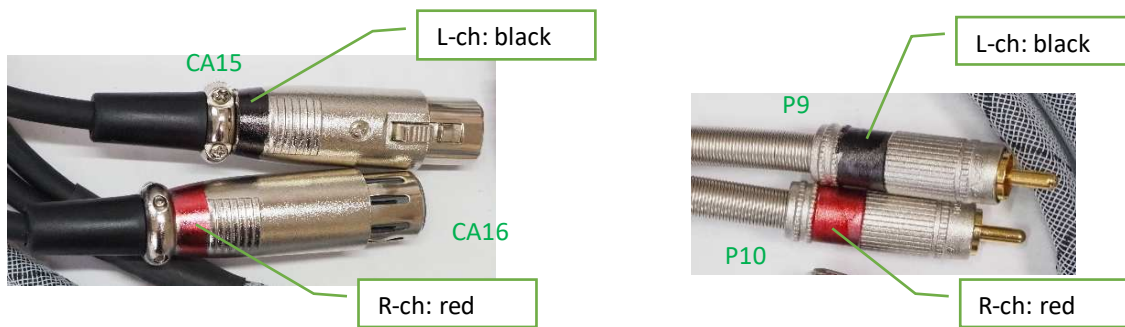
Cut the white wire off the pin-3 (cold).

Refix the connector.



(11) Mark connectors

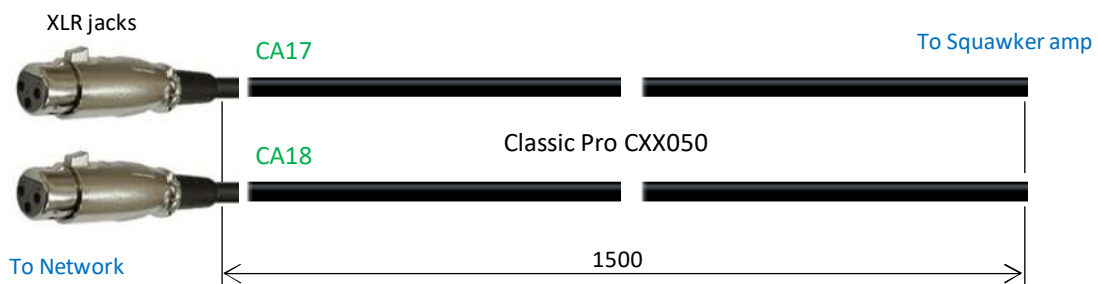
Mark the connectors with a marking pen as shown below.



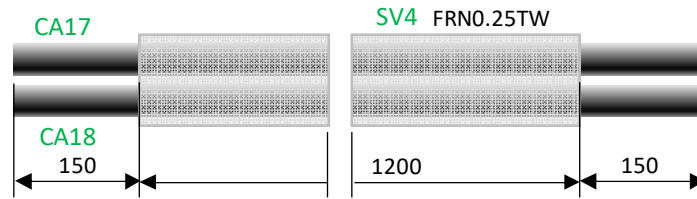
CB13: Network to Squawker Amp (for temporal use)

Tools: wire stripper, cutter, nipper, solder, soldering iron, blower, sissors, marking pens (black & red)

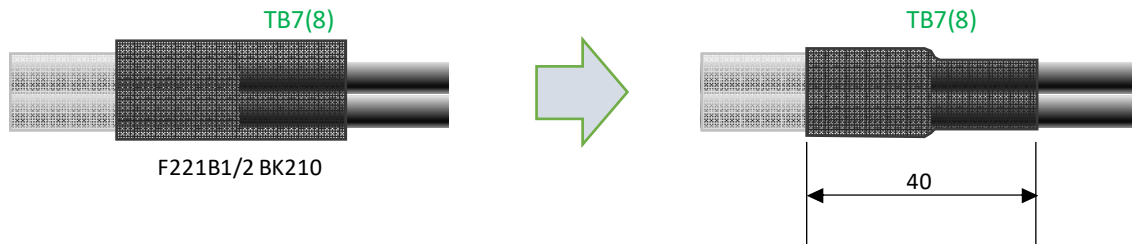
(1) Cut 2 cable assys (Pro CXX050) into 1.5m long (CA17-18)



(2) Cut sleeving (FRN0.25TW) into 1.2m (SV4) and slide it onto the cabel assys CA17-18



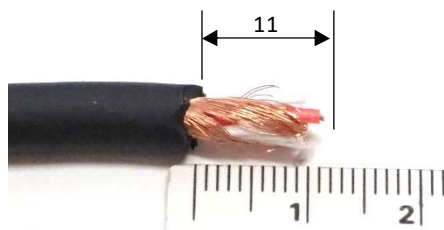
(3) Cut the shrink tubes into two 40mm ones (TB7-8) and slide them onto the wires and sleeveings, and shrink the tubes

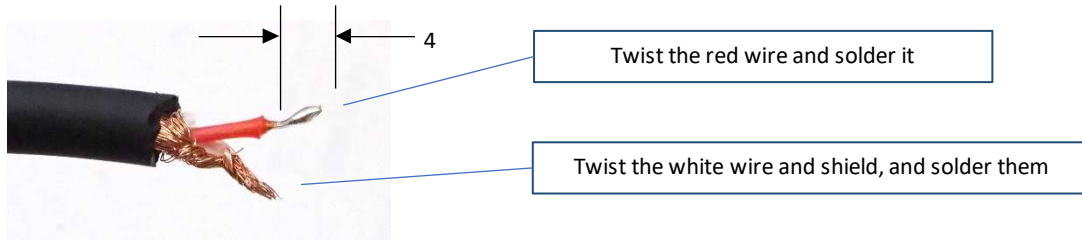


(4) Slide the shells of the RCA plugs (P11-12) onto the wires



(5) Strip the insulators of the wires





(6) Solder the red wire to the hot terminal



(7) Solder the white wire and shield to the cold terminal, and crimp the sheath of the cable



(8) Fix the shell

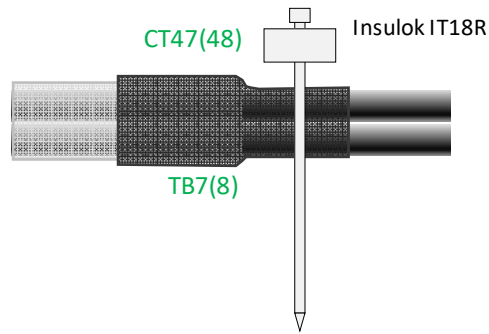


(9) Attach cable ties

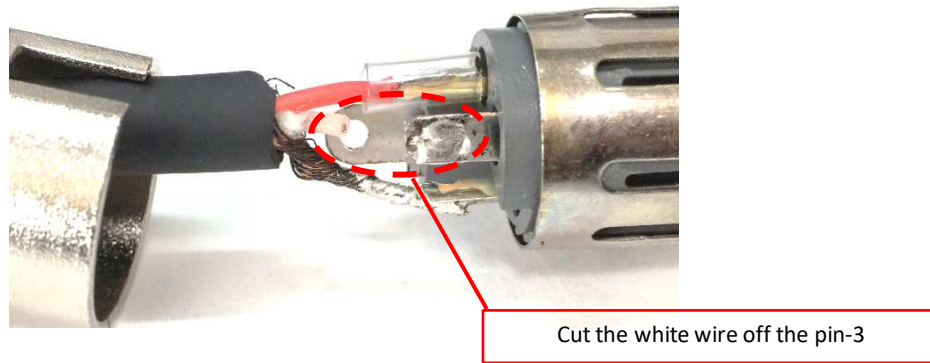
Mark CT47-48 following the table on right.

Tie CT47-48 onto the tube (TB7-8)

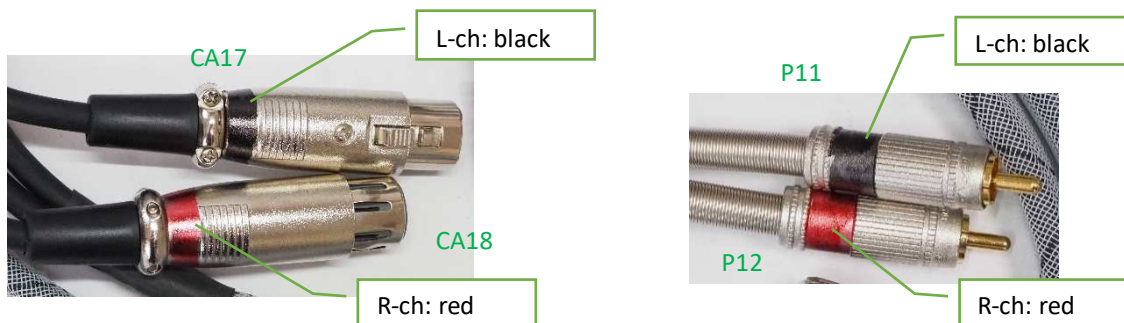
| Ref des | End | Marking |
|---------|--------------|--------------|
| CT47 | Network | CB13 MID OUT |
| CT48 | Squawker amp | CB13 MID IN |



- (10) Make pin-3 (cold) of the XLR connectors open
 Dismantle the XLR connectors.
 Cut the white wire off the pin-3 (cold).
 Refix the connector.



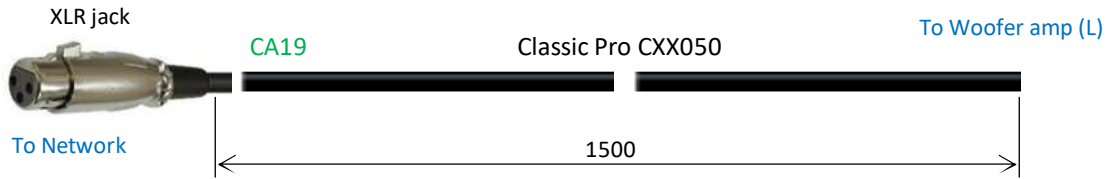
- (11) Mark connectors
 Mark the connectors with a marking pen as shown below.



CB14: Network to Woofer Amp (L)

Tools: wire stripper, cutter, nipper, solder, soldering iron

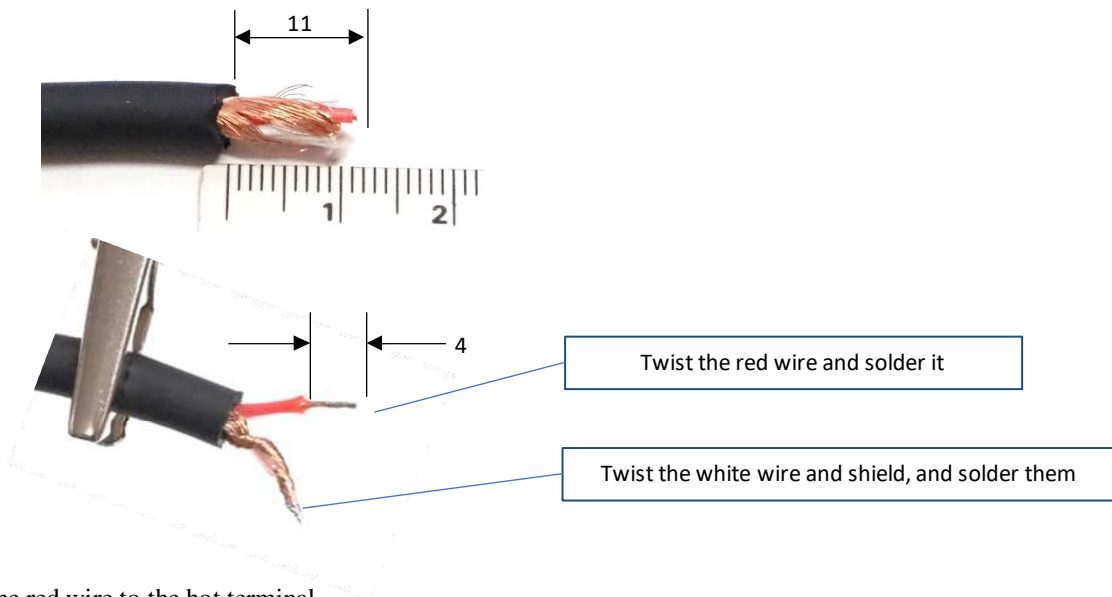
(1) Cut cable assy (Pro CXX050) into 1.5m long (CA19)



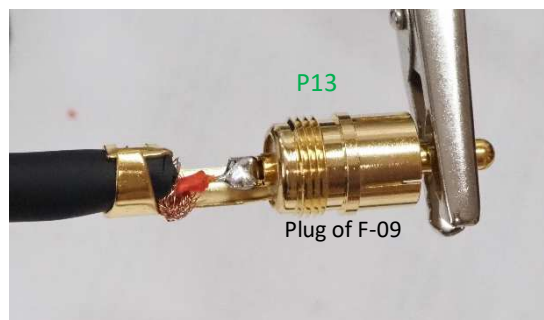
(2) Slide the shells of the RCA plug (P13) onto the wire



(3) Strip the insulators of the wires



(4) Solder the red wire to the hot terminal



(5) Solder the white wire and shield to the cold terminal, and crimp the sheath of the cable



(6) Fix the shell

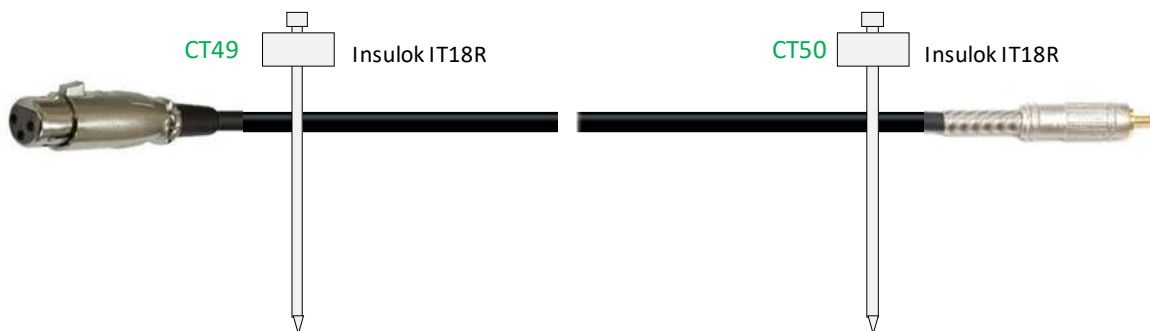


(7) Attach cable ties

Mark CT49-50 following the table on right.

Tie CT49-50 onto the wire near the connector

| Ref des | End | Marking |
|---------|-----------------|----------------|
| CT49 | Network | CB14 LOW OUT L |
| CT50 | Woofers amp (L) | CB14 LOW IN L |

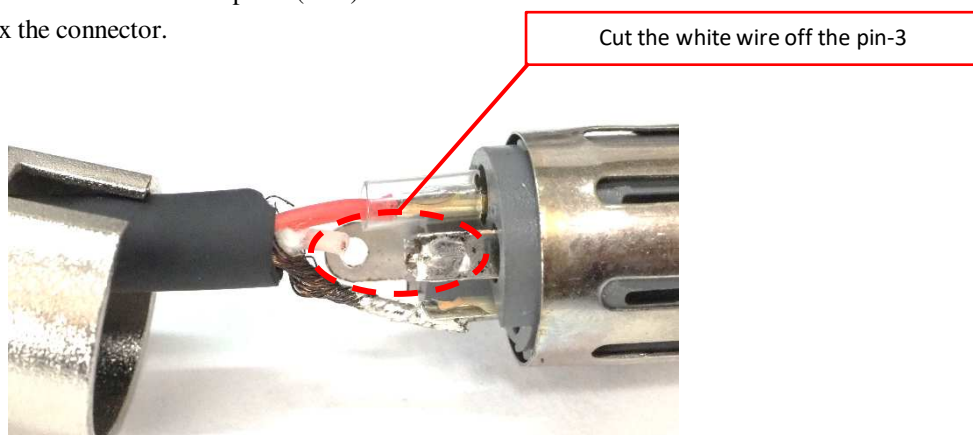


(8) Make pin-3 (cold) of the XLR connectors open

Dismantle the XLR connectors.

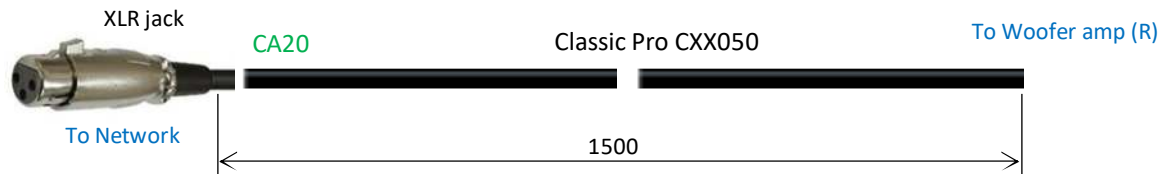
Cut the white wire off the pin-3 (cold).

Refix the connector.



CB15: Network to Woofer Amp (R)**Tools: wire stripper, cutter, nipper, solder, soldering iron**

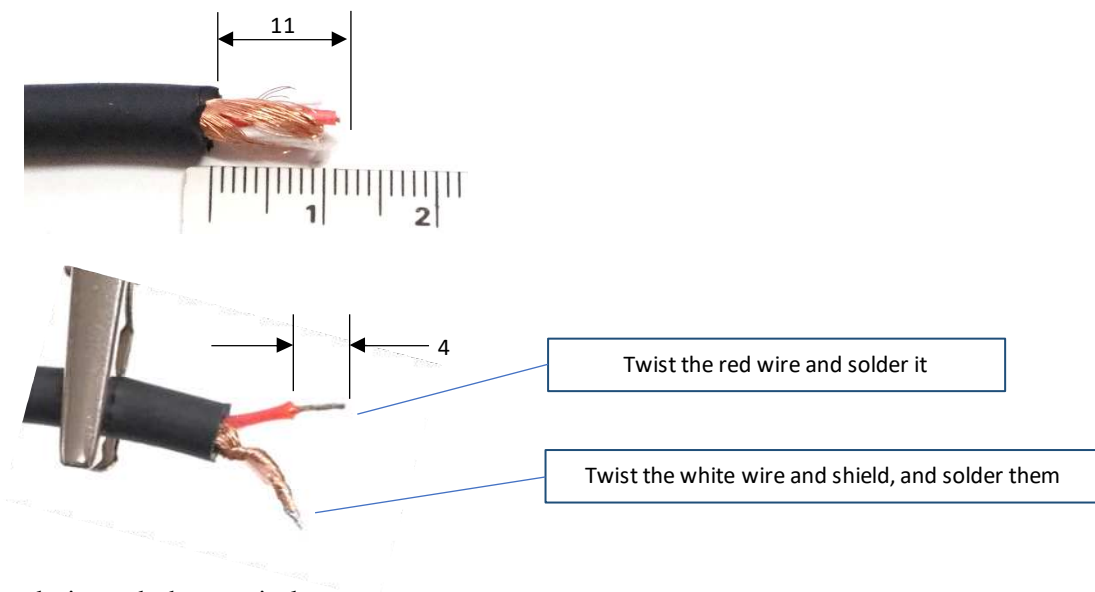
(1) Cut cable assy (Pro CXX050) into 1.5m long (CA20)



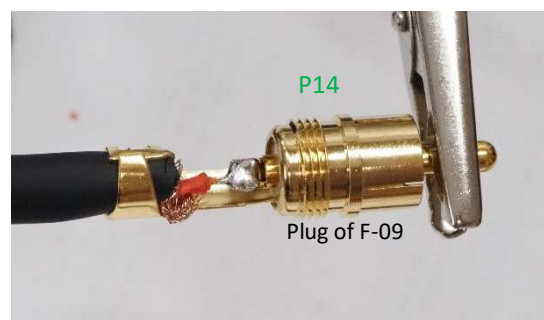
(2) Slide the shells of the RCA plug (P14) onto the wire



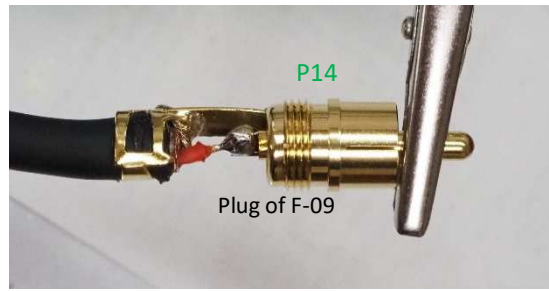
(3) Strip the insulators of the wires



(4) Solder the red wire to the hot terminal



(5) Solder the white wire and shield to the cold terminal, and crimp the sheath of the cable



(6) Fix the shell

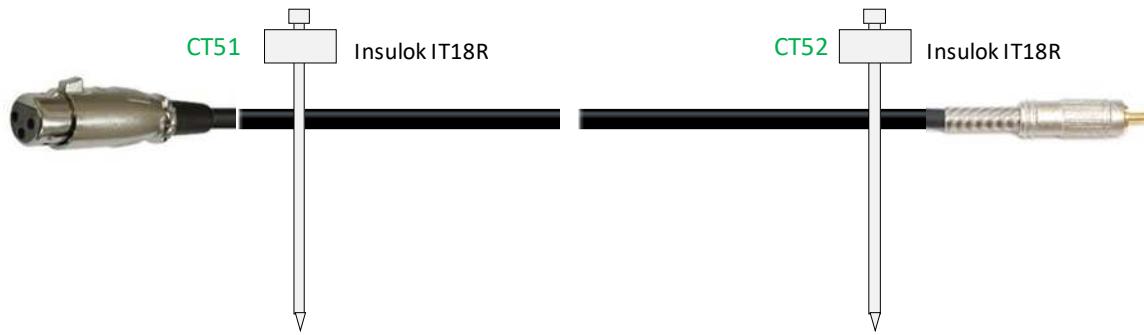


(7) Attach cable ties

Mark CT51-52 following the table on right.

Tie CT51-52 onto the wire near the connector

| Ref des | End | Marking |
|---------|----------------|----------------|
| CT51 | Network | CB15 LOW OUT R |
| CT52 | Woofer amp (R) | CB15 LOW IN R |

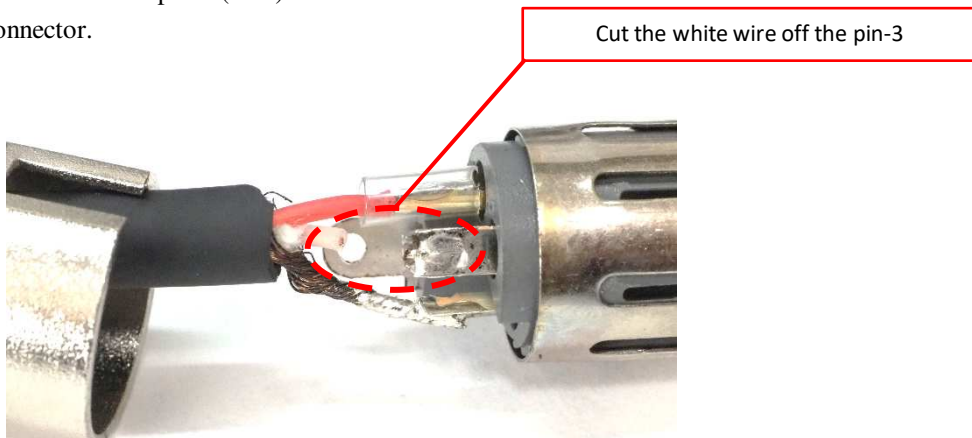


(8) Make pin-3 (cold) of the XLR connectors open

Dismantle the XLR connectors.

Cut the white wire off the pin-3 (cold).

Refix the connector.



[END OF DOCUMENT]