



CC-218 EQ BOARD

Design

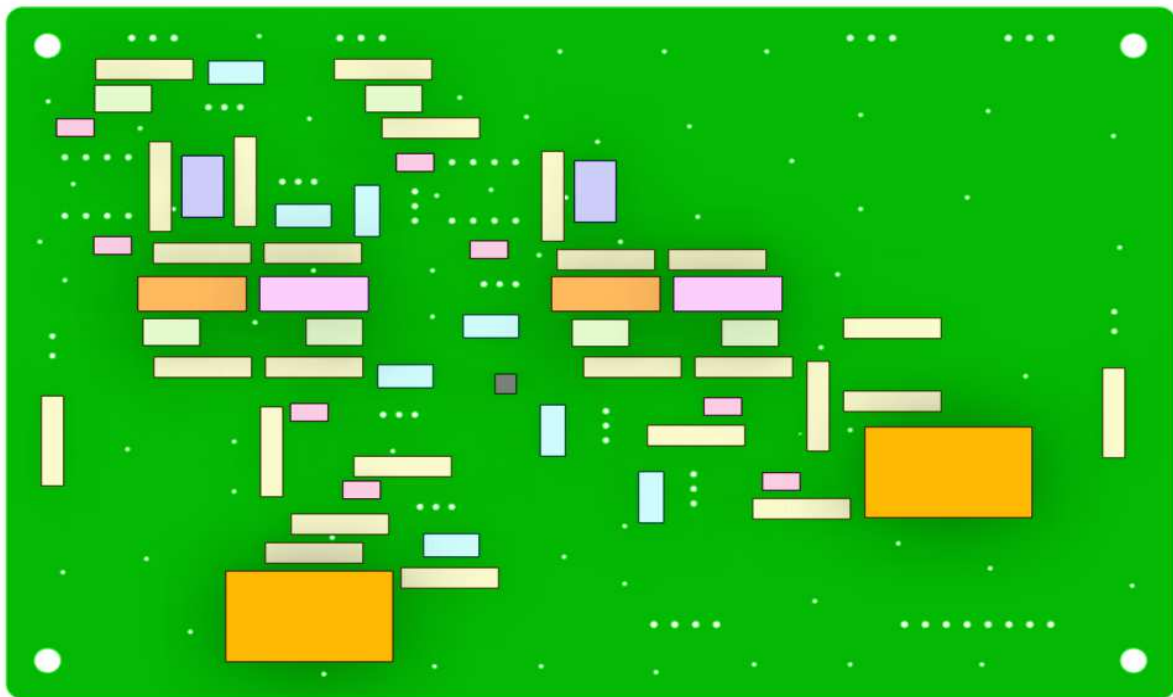
2025/04/23

Assy

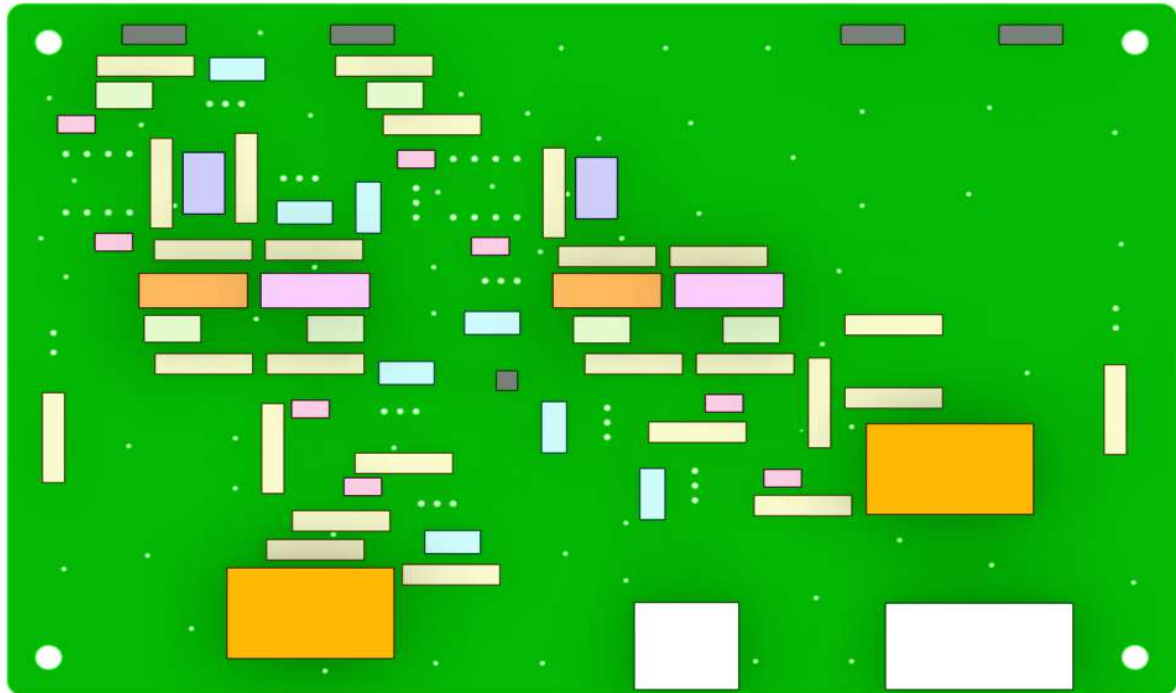
Mount Devices on PCB5

Mount devices on PCB5 according to BOM_EQ.

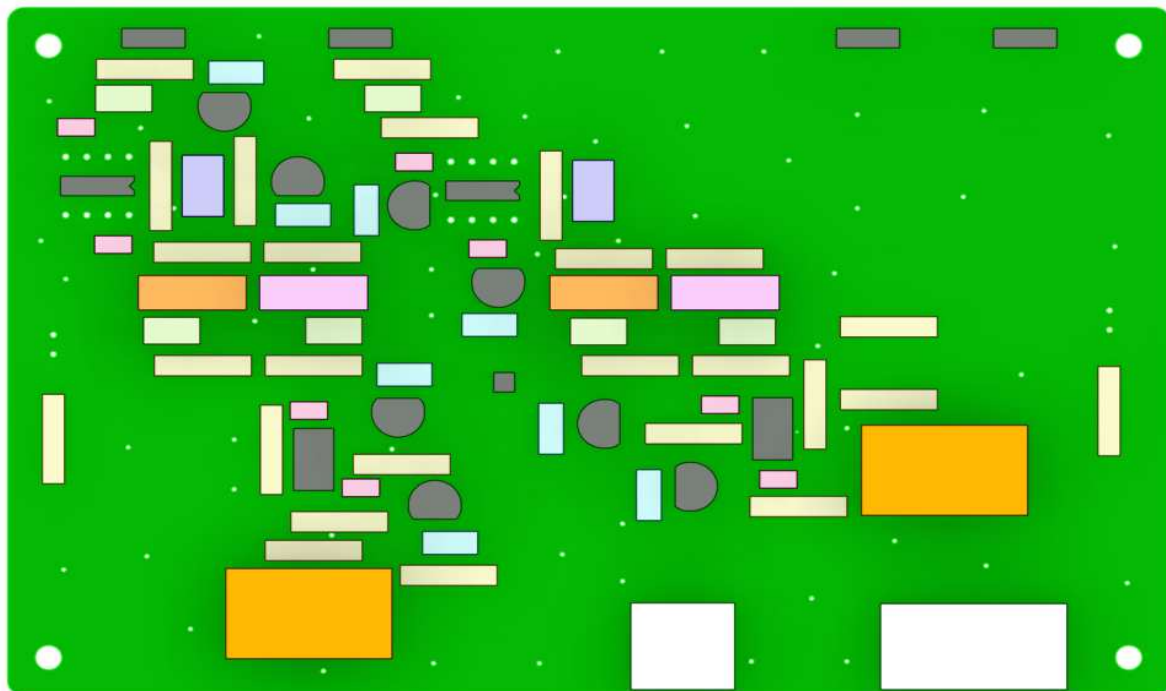
* Mount resistors, capacitors, check pin

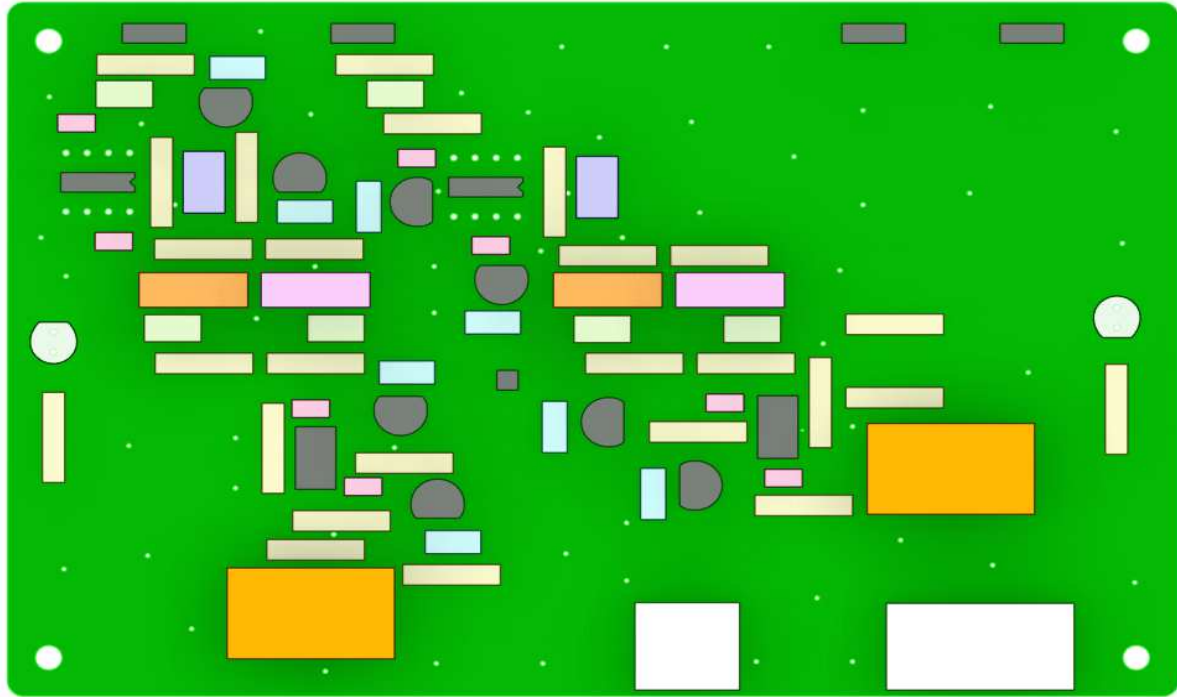


*** Mount pin sockets, connectors**

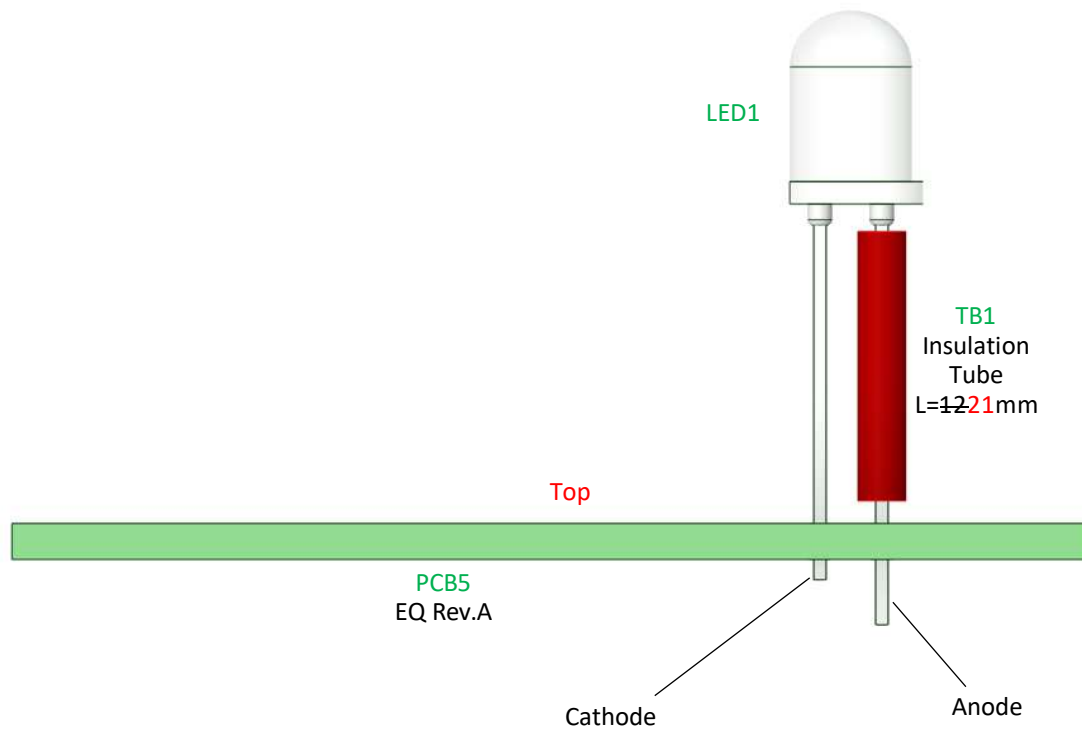


*** Mount ICs**



*** Mount LEDs**

LEDs (LED1-2) mounted with insulation tubes TB1-2.



*** Bug fix**

2025/03/03

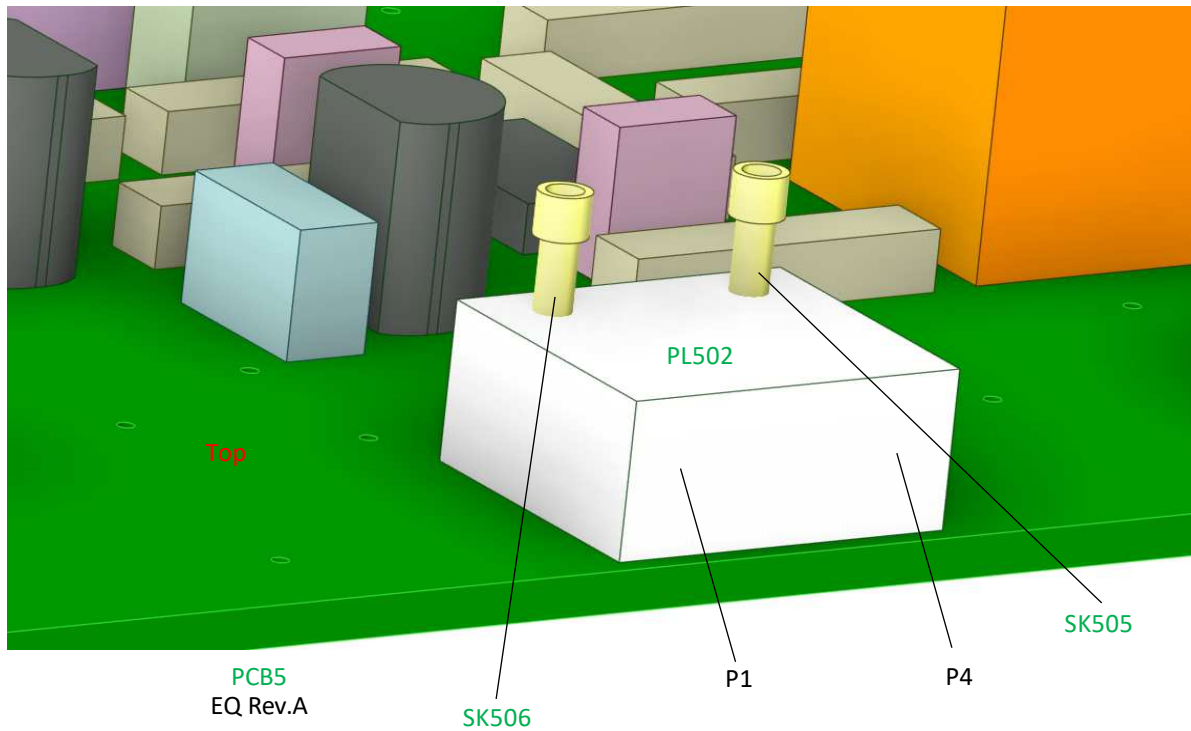
It was found out that Mogami 2520 (W55-56) isn't compatible with the solderless contact (JST SXH-001T-P0.6).

Pin sockets are used instead of the contacts.

Solder pin sockets (SK505-506) to PL502:P1,4 as illustrated below.

SK505 --> PL502:P4 (EQ_OUT_L)

SK506 --> PL502:P1 (EQ_OUT_R)



[END OF DOCUMENT]