

-6dB/oct. Passive filter

Input filter

f	1000000[Hz]		
R	1[Kohm]	C	159[pF] 0.000159[uF]

Subsonic filter

f	20[Hz]		
R	47[Kohm]	C	169314[pF] 0.169314[uF]

-18dB/oct. Active filter

f_{c2}	7200[Hz]		
R	10[Kohm]	C	2210[pF] 0.002210[uF]
R1	10[Kohm]	C1	2210[pF] 0.002210[uF]
R2	10[Kohm]	C2	2210[pF] 0.002210[uF]
R3	10[Kohm]	C3	2210[pF] 0.002210[uF]
R4	4.82[Kohm]	C4	4620[pF] 0.004620[uF]
R5	20.9[Kohm]	C5	1065[pF] 0.001065[uF]
R6	10[Kohm]	C6	2210[pF] 0.002210[uF]

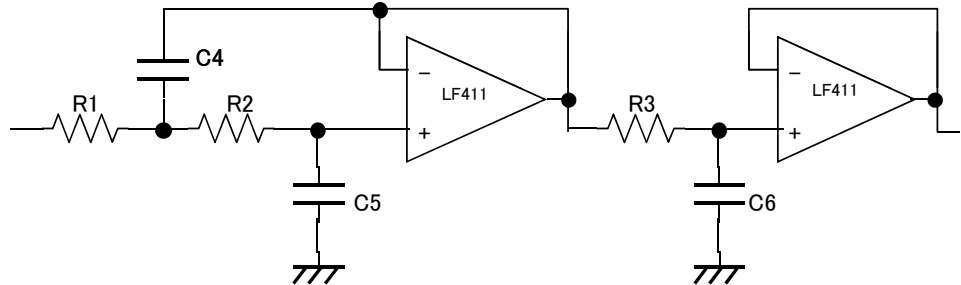
f_{c2}	7234[Hz]		
R'	10[Kohm]	C'	2200[pF] 0.002200[uF]
R1'	10[Kohm]	C1'	2200[pF] 0.002200[uF]
R2'	10[Kohm]	C2'	2200[pF] 0.002200[uF]
R3'	10[Kohm]	C3'	2200[pF] 0.002200[uF]
R4'	4.82[Kohm]	C4'	4598[pF] 0.004598[uF]
R5'	20.9[Kohm]	C5'	1060[pF] 0.001060[uF]
R6'	10[Kohm]	C6'	2200[pF] 0.002200[uF]

f_{c1}	860[Hz]		
R	10[Kohm]	C	18506[pF] 0.018506[uF]
R1	10[Kohm]	C1	18506[pF] 0.018506[uF]
R2	10[Kohm]	C2	18506[pF] 0.018506[uF]
R3	10[Kohm]	C3	18506[pF] 0.018506[uF]
R4	4.82[Kohm]	C4	38678[pF] 0.038678[uF]
R5	20.9[Kohm]	C5	8920[pF] 0.008920[uF]
R6	10[Kohm]	C6	18506[pF] 0.018506[uF]

f_{c1}	884[Hz]		
R'	10[Kohm]	C'	18000[pF] 0.018000[uF]
R1'	10[Kohm]	C1'	18000[pF] 0.018000[uF]
R2'	10[Kohm]	C2'	18000[pF] 0.018000[uF]
R3'	10[Kohm]	C3'	18000[pF] 0.018000[uF]
R4'	4.82[Kohm]	C4'	37620[pF] 0.037620[uF]
R5'	20.9[Kohm]	C5'	8676[pF] 0.008676[uF]
R6'	10[Kohm]	C6'	18000[pF] 0.018000[uF]

$R1, R2, R3, R6 = R$ $R4 = 0.482 \times R$ $R5 = 2.09 \times R$
 $C = 1/(2 \times \text{PHI} \times f_c \times R)$ $C1, C2, C3, C6 = C$
 $C4 = 2.09 \times C$ $C5 = 0.482 \times C$

Low pass filter



High pass filter

